


Beyond Beauty  
**Intima RF**™  
Product Info

 SeoulinMedicare

CE MDD Certificated

**360°RF** Vaginal Rejuvenation  
Feminine Beauty

Vaginal Rejuvenation | Labium Treatment | Fast Treatment | Safety



baltic beauty  
prof



Beyond Beauty  
**Intima RF™**

## TECHNOLOGY BACKGROUND

During menopause, fibroblasts in the vaginal mucosa slow down and can no longer produce enough collagen.

RF (Radio Frequency) energy acts on the mucosa by stimulating the metabolic activation of the fibroblasts and collagen. Remodeling extramatrix components and water, boosting thickness of connective tissue and epithelium.


The result is improved nourishment, tonicity, elasticity and firmness, similar to when the patient was younger.



# Intima RF™



## New Advanced RF Energy

- RF energy delivers thermal stimulation to deep inside of skin.
  - Promoting collagen generation and elastin synthesis to improve elasticity of vaginal tissue.
  - Similar products / RF radiation of a hand piece / cross-section radiation
- Intima RF / RF radiation of a hand piece / 360° radiation**  **Maximization of Efficacy**

## Total Solution

- Vaginal tightening, Labioplasty, Vaginal dryness improvement, Orgasmic disorder and Urinary Incontinence Improvement
- With this single device, vaginal tightening and labia rejuvenation are available.

## Efficacy

- Simple and quick treatment within 30mins. Effects will be observed in a week or 2 weeks.
- **One would see certain effect in a month from the treatment.** It takes effect gradually in 3~6 months from the treatment. **Its effect lasts for more than a year.**

## Smart OED (Optimized Energy Delivery) System

- Smart OED system enables to check impedance and temperature in real-time – so that one can manage energy level to an optimal energy level **automatically.**
- Stable energy supply by monitoring fluctuating impedance and temperature





### Total Solution

Vaginal tightening,  
Urinary incontinence  
improvement,  
Labia rejuvenation



**Non-invasive**



**Quick  
Treatment**



**No Pain!  
No side effect!**



**Short  
Downtime**



**No Anesthesia!**

# 4 IN ONE TOTAL CARE SOLUTION



## Vaginal Tightening

RF Thermal energy stimulates collagen generation in vaginal mucosa and, activates tissue to tighten vaginal wall.



## Urinary Incontinence

RF Thermal energy causes contradiction on vaginal mucosa resulting in Improvement of stress urinary incontinence.



## Labia Remodeling

Labia rejuvenation with RF reduces size and diameter of labium majora and minora making it aesthetic and symmetric.

skin recovery effect induces darkened labia brightening.



## Facial Skin Recovery

RF facial treatment is available with a facial tip.

Facial treatment before vaginal treatment can relax patients.

## RF TECHNOLOGY VAGINAL REJUVENATION

The RF devices that emit focused electromagnetic waves generating heat upon meeting tissue impedance have been widely applied for an array of aesthetic indications in facial and off-face sites, targeting cellulite, laxity, and noninvasive fat removal.

RF energy technology has a proven clinical history in terms of safety, efficacy, and patient satisfaction. Monopolar RF has been used to treat stress urinary incontinence with minimal risk of adverse events, and RF has only recently been explored as a noninvasive strategy to achieve tightening of the vaginal canal.

Several devices in the market currently offer RF-based vaginal rejuvenation. None of these technologies require anesthesia, and on average, the treatment duration spans 15 to 30 min. Patients report feeling a sensation of warmth, which is very tolerable, and due to the lack of downtime, they can resume their normal activities the same day.

*Source: Vaginal rejuvenation using energy-based devices / Cheryl Karcher, MD a, Neil Sadick, MD / International Journal of Women's Dermatology*



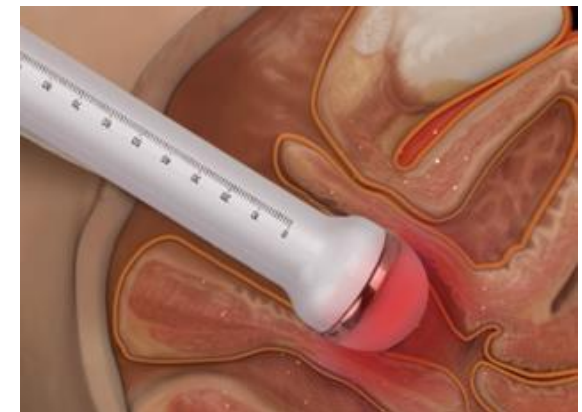




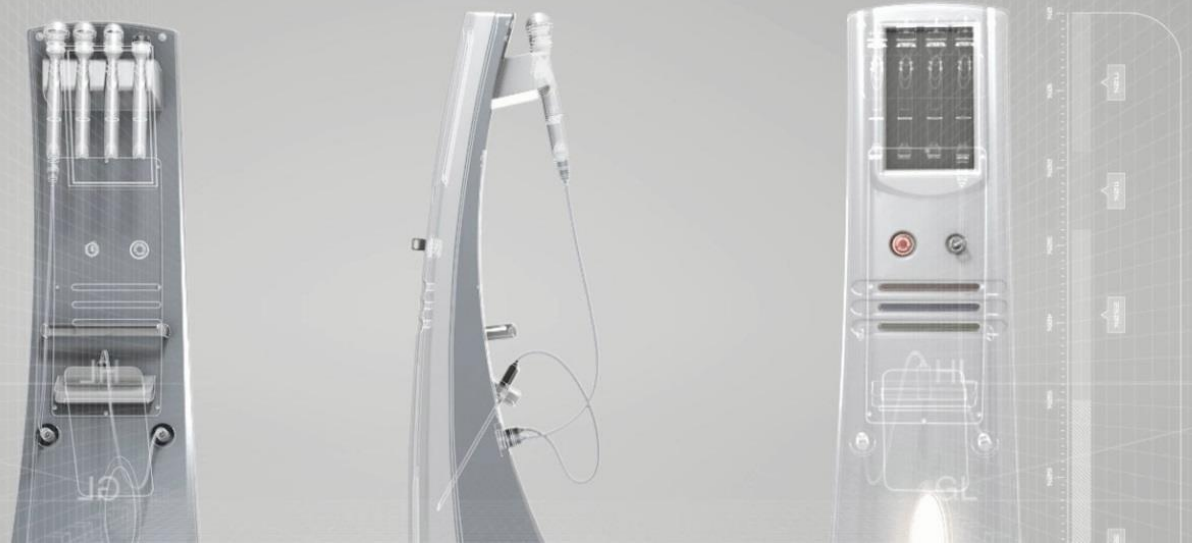
## HOW RF WORKS?

Vaginal mucosa and skin differ significantly in epithelium structure. The outer skin layer has plenty of keratin and little water, while mucosal epithelium is nonkeratinized, containing water and glycogen. Due to their different levels of hydration, the Co2 laser (highly absorbed by water) has different effects on skin and on mucosa.

By harnessing RF waves to heat the connective tissue of the Vaginal wall to 40 °C to 42 °C, these energy-based devices aim to induce collagen contraction, neocollagenesis, vascularization, and growth factor infiltration that ultimately revitalize and restore the elasticity and moisture of the vaginal mucosa.

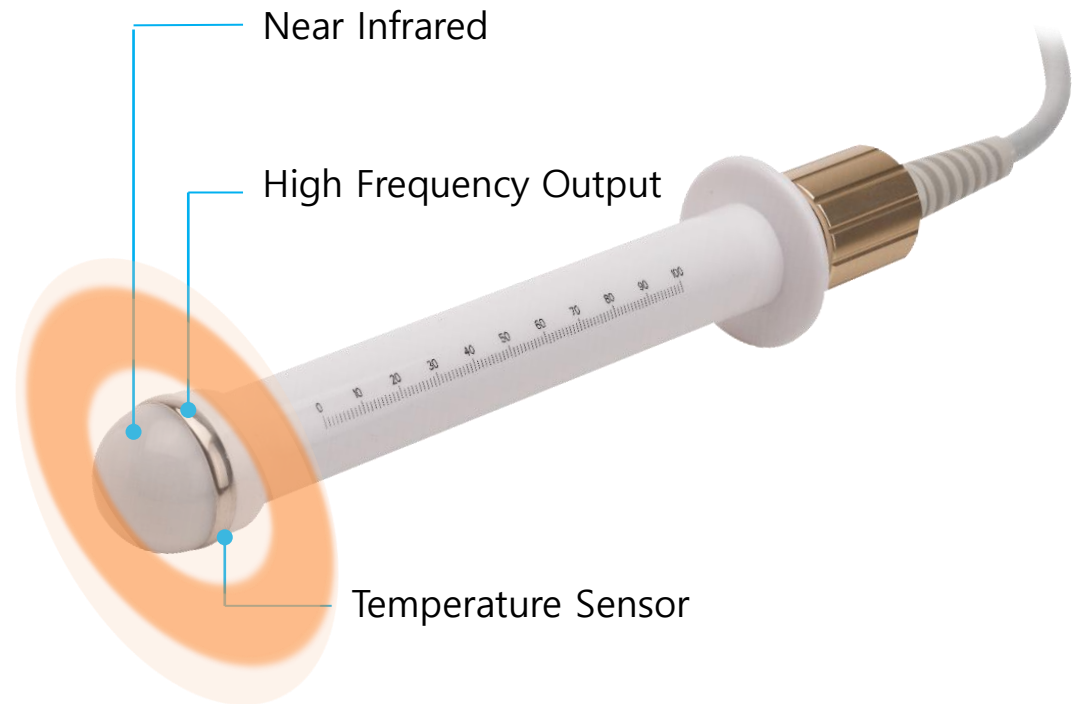


*Source : Vaginal rejuvenation using energy-based devices / Cheryl Karcher, MD a, Neil Sadick, MD / International Journal of Women's Dermatology*



# Advanced 360°RF

- **Super Fast Vaginal Treatment Time**
- **360° Large Contact Area**
- **No Need Hand piece Rotation**
- **Comfortable RF Treatment**



- Internal treatment includes vaginal tightening and urinary incontinence improvement.



Total Solution

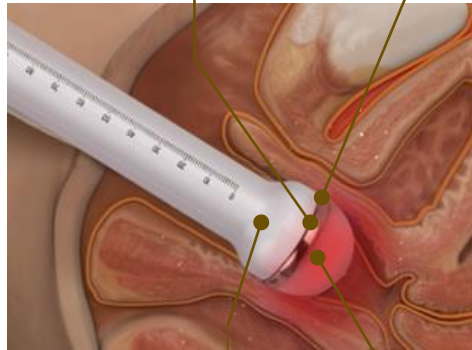


Total solution for vaginal tightening, urinary incontinence and labia rejuvenation

## ● Vaginal tightening & Urinary incontinence Improvement

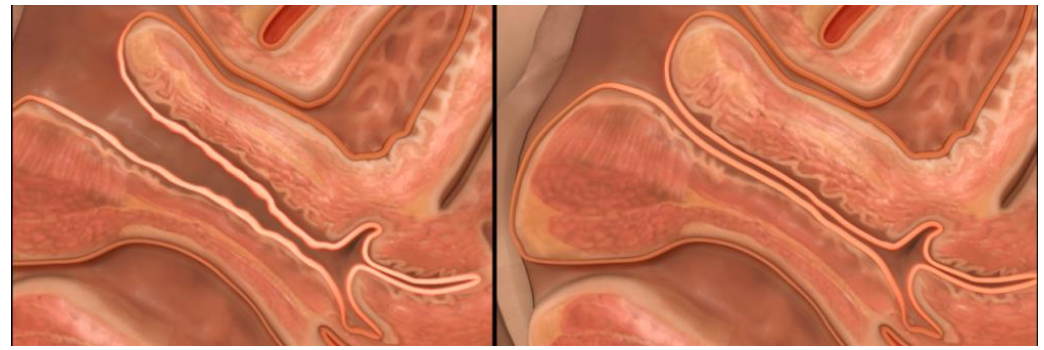
Real-time temperature and impedance check enables steady and safe RF energy delivery

Strong and accurate RF energy delivery within short time



**Before**

**After**



Maximizing treatment Effectiveness by infrared LED.

A disposable handpiece is sterilized for hygienic operation.



# Treatment of Labia

- Labium tightening
- Improve color lightening
- Achieve the pink color vulva



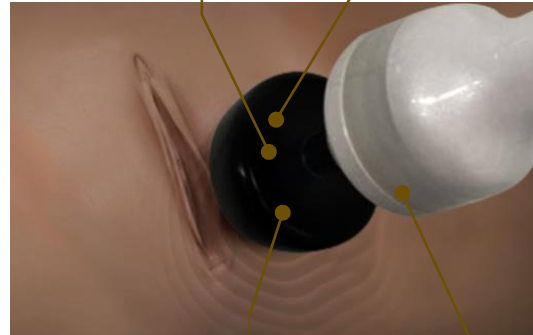
Total Solution



Vaginal tightening,  
Urinary improvement  
Total solution for labia  
rejuvenation

## ● Labia rejuvenation

Safe RF energy delivery by specially coated handpiece tip



Strong and accurate RF energy delivery within short time

**Before**



**After**



Real-time impedance check enables safe and steady RF energy delivery

A disposable hand piece is sterilized for hygienic operation.





# Smart OED System

- OED (Optimized Energy Delivery) System
- Skin Impedance Check System
- Monitoring Temperature Changes
- Control the Reliable Energy Power



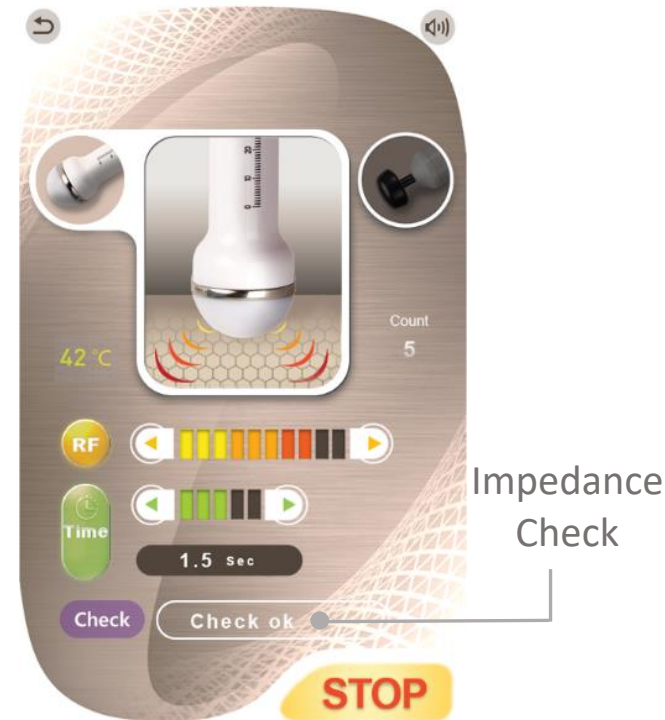


## Smart OED System



Smart OED system facilitates automatic energy level control to optimal level by real-time impedance and temperature check

## ● Impedance Check System



- The impedance of the procedure area differs by person hence measuring the impedance and supplying accurate RF energy increases the treatment effect
- Supply stable energy by checking the impedance which changes dramatically during the procedure

## Smart OED System



Smart OED system facilitates automatic energy level control to optimal level by real-time impedance and temperature check

## ● Temperature Check System



- By monitoring the temperature of the procedure area in real-time, it enables accurate and safe procedure
- Prevent burning of the procedure area by checking the temperature



# Various Handpiece

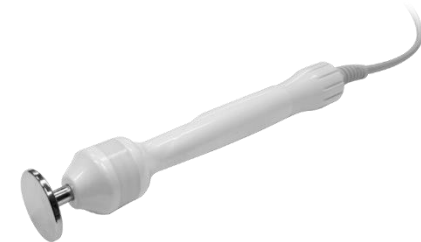
Vaginal Handpiece



Labium Handpiece









Facial Handpiece

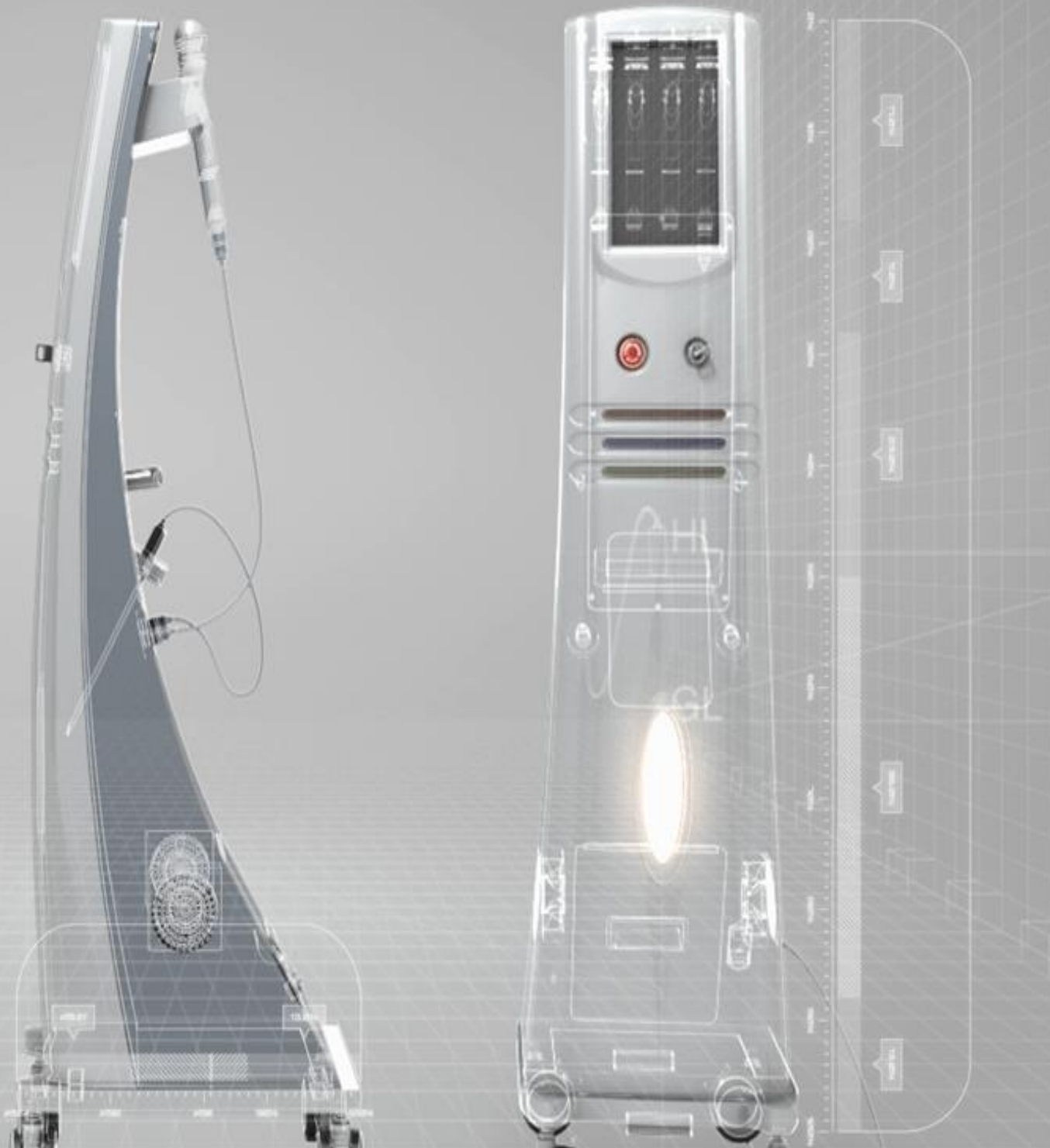


	<b>RF Energy Intima RF<sup>®</sup></b>	<b>Co2 Laser</b>
<b>Sexual Activity</b>	<b>The day after treatment</b>	In 4~5days
<b>Labia Treatment</b>	<b>Yes</b>	Yes
<b>Smoke</b>	<b>No</b>	Yes
<b>Bleeding</b>	<b>No</b>	Yes
<b>Anesthesia</b>	<b>No</b>	Yes (Including labia treatment)
<b>Effectiveness</b>	<b>★★★★★</b>	<b>★★★</b>
<b>Down Time</b>	<b>No</b>	A week
<b>Feeling of Treatment</b>	<b>Feeling like warm massage</b>	Feeling like needling pain
<b>Training</b>	<b>No</b>	Yes



## OTHER RF DEVICE vs. INTIMA RF

Model	Frequency Power	RF energy radiation	Labia Treatment	Impedance Check	Facial Treatment	Treatment Time	Price
	<b>Intima RF (Korea)</b> 480 Khz 200W	 360°	O	O	O	10 Min.	Less than \$29,999
	<b>Thermiva (USA)</b> 460 Khz 200W	 Side only	O	X	X	40 Min.	\$70,000
	<b>Viveve (USA)</b> 6.15 Mhz -	 Side only	O	X	X	40 Min.	\$90,000



# Intima RF™

## specification

- **Input Power :**  
AC 220 ~ 240V, 50/60Hz
- **Power Consumption :**  
**400W**  
Maximum output current (0~300mA)  
Maximum voltage (0~230Vpp)  
/Frequency (480KHz)  
Maximum operation time  
(Shot type : 2.5 Sec / TIME : 15Min)
- **Dimension(mm) :**  
349(W)\*457(D)\*1282(H)



# baltic beauty prof



---

**Address Estonia:** Tartu mnt 28, Tallin,10115, Estonia

Phone number: [+372 58003124](tel:+37258003124)

**Address Latvia:** Terbatas 12, office 307, Riga, Latvia

Phone number: [+371 244 255 44](tel:+37124425544)

**Homepage** [www.balticbeautyprof.com](http://www.balticbeautyprof.com)